

MP Biomedicals, LLC

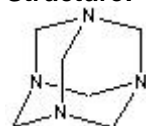
29525 Fountain Parkway
Solon, Ohio 44139

Telephone: 440/337-1200
Toll Free: 800/854-0530
Fax: 440/337-1180
mailto: biotech@mpbio.com
web: <http://www.mpbio.com>

TECHNICAL INFORMATION

Catalog Number: 194050
Hexamethylenetetramine ACS

Structure:



Molecular Formula: C₆H₁₂N₄

Molecular Weight: 140.20

CAS # 100-97-0

Synonym: Methenamine

Physical Appearance: White crystalline powder

Solubility: Soluble in cold water, chloroform, alcohol; Insoluble in diethyl ether