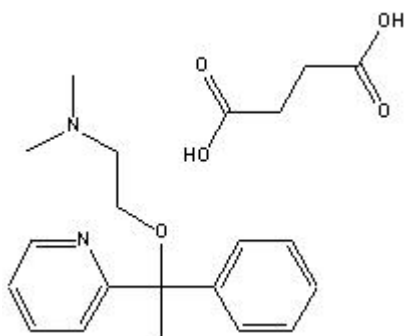


TECHNICAL INFORMATION

Catalog Number: 151017

Doxylamine succinate

Structure:



Molecular Formula: C₁₇H₂₂N₂O · C₄H₆O₄

Molecular Weight: 388.5

CAS # : 562-10-7

Synonym: 2-[a-[2-(Dimethylamino) ethoxy]-a-methylbenzyl]pyridine succinate (1:1)

Physical Description: White to light yellow crystals

Description: Doxylamine succinate is a white, crystalline powder

Solubility: Freely soluble in water (1 g/1 ml); soluble in alcohol (1g/2 ml), chloroform (1g/2 ml), ethanol. Slightly soluble in benzene and ether.