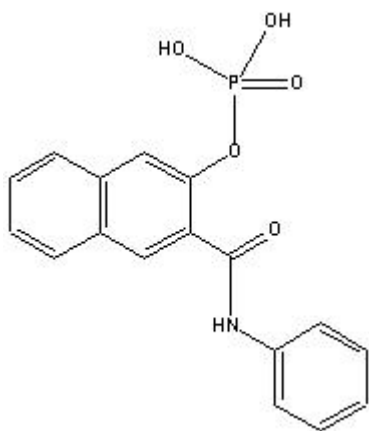


## TECHNICAL INFORMATION

Catalog Number: 102417  
**Naphthol AS Phosphate**

**Structure:**



**Molecular Formula:** C<sub>17</sub>H<sub>14</sub>NO<sub>5</sub>P

**Molecular Weight:** 343.3

**CAS # :** 13989-98-5

**Synonym:** 2-Hydroxy-3-naphthoic acid anilide phosphate

**Physical Appearance:** Light tan powder

**Description:** A substrate for the histochemical location of phosphatases

**Solubility:** Soluble in methanol (10 mg/ml-clear, slightly yellow solution)