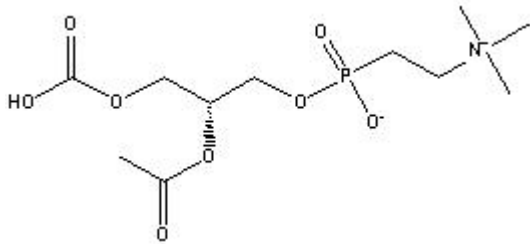


TECHNICAL INFORMATION

Catalog Number: 102148
Lecithin soybean oil not removed

Structure (approximate):



CAS #: 8002-43-5

Synonyms: 1,2-Diacyl-sn-glycero-3-phosphocholine; L-alpha-Lecithin; 3-sn-Phosphatidylcholine; L-alpha-Phosphatidylcholine

Physical Description: Viscous golden brown liquid

Description: Lecithin is a phosphatidylcholine of soybean origin. Used as an emulsifier and solubilizer for drugs in an aqueous solution, also as a vehicle for liposomes.

Typical Composition: The product consists of phosphatidylcholine in soybean oil (below are approximate values based on purified lecithin).

| | | |
|-----------------------------|--------|--------------|
| lyso-phosphatidylcholine | 3% | |
| other phospholipids | 2% | |
| moisture | 0.8% | |
| oil | 2.0% | |
| a-tocopherol | 0.2% | |
| fatty acids (total content) | 82.5% | |
| including: | | |
| saturated fatty acids | 16-22% | |
| monounsaturated fatty acids | 8-12% | |
| polyunsaturated fatty acids | 62.68% | |
| of which: | | |
| linoleic acid | 58-60% | |
| linolenic acid | 6-8% | |
| phosphorus | 3.7% | meg/1000g |
| peroxide value | 5 | kcal/kg |
| caloric value | 9000 | kJ /kg |
| | 37000 | |
| total plate count | 500 | /g |
| yeast | 50 | /g |
| mold | 50 | /g |
| Enterobacteriaceae | | negative/g |
| Salmonella | | negative/25g |

Solubility: Soluble in about 12 parts cold, absolute alcohol; soluble in chloroform, ether, petr ether, in mineral oils and fatty acids; sparingly soluble in benzene. Insoluble in acetone.¹

Availability:

| Catalog Number | Description | Size |
|----------------|---|--|
| 151540 | Lecithin, from bovine heart. Supplied in ampoules containing 100 mg of choline plasmogen and phosphatidyl choline in a colorless chloroform:methanol solution | 1 amp 5 amps |
| 151541 | Lecithin, from bovine spinal cord. Supplied in ampoules containing 100 mg bovine spinal cord lecithin in a colorless solution of methanol:chloroform | 1 amp 5 amps |
| 102146 | Lecithin, from egg, semi-purified (purity approximately 60%) | 25 g 100 g |
| 160059 | Lecithin, from egg, purified | 100 mg 250 mg 500 mg 1 g 5 g |
| 102147 | Lecithin, from soybean, refined, oil removed | 100 g 250 g 500 g 1 kg |
| 102148 | Lecithin, from soybean, oil not removed | 1 lb 5 lb |
| 151539 | Lecithin, from soybean, water dispersable grade | 25 g 100 g 250 g 500 g |

Reference:

– *Merck Index*, 12th Ed., No. 5452.