

Triple Color Precision Protein Ladder (10-180 kDa)

DESCRIPTION

The Triple Color Precision Protein Ladder (10-180 kDa) is a ready to use three-color protein standard with 10 pre-stained proteins covering a wide range of molecular weights from 10 to 180 kDa (9 to 170 kDa in Bis-Tris (MOPS) buffer and 10 to 170 kDa in Bis-Tris (MES) buffer).

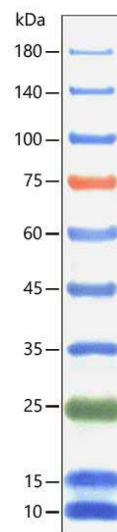
Proteins are covalently coupled with a blue chromophore except for two reference bands (one green and one red band at 25 kDa and 75 kDa, respectively) when separated on SDS-PAGE (Tris-Glycine buffer).

This marker is designed for monitoring protein separation during SDS-polyacrylamide gel electrophoresis, verification of Western transfer efficiency on membranes, (PVDF, nylon or nitrocellulose) and for approximating the size of proteins.

GUIDE FOR MOLECULAR WEIGHT ESTIMATION

Migration patterns and approximate MWs (kDa) of Triple Color Precision Protein Ladder (10-180 kDa) in different electrophoresis conditions are listed below:

Band	Color	TRIS-GLYCINE/ kDa	BIS-TRIS (MOPS)/ kDa	BIS-TRIS (MES)/ kDa
1	Blue	180	170	170
2	Blue	140	130	130
3	Blue	100	93	93
4	Red	75	70	72
5	Blue	60	53	53
6	Blue	45	41	42
7	Blue	35	30	30
8	Green	25	22	23
9	Blue	15	14	14
10	Blue	10	9	10



CONTENTS

Approximately 0.1~0.4 mg/mL of each protein in the buffer (20 mM Tris-phosphate (pH 7.5 at 25 °C), 2% SDS, 0.2 mM Dithiothreitol, 3.6 M Urea, and 15% (v/v) Glycerol).

STORAGE

4 °C for 3 months, -20 °C for 2 years

NOTICE

- 1 Ready to use: **Do NOT heat, dilute or add reducing agents before loading**
- 2 Reference bands: 75 kDa (red), 25 kDa (green)
- 3 Loading Volume: 3–5 µL/well for mini gel; 1.5–2.5 µL/well for Western transfer; 6–10 µL/well for large gel
- 4 Type of membranes: PVDF, nylon or nitrocellulose



MP BIOMEDICALS

AMERICAS: 800.854.0530 | custserv.na@mpbio.com

EUROPE: 00800.7777.9999 | custserv.eur@mpbio.com

APAC: +65 6775.0008 | custserv.ap@mpbio.com

Learn more at www.mpbio.com

