

Smart Vortenizer™

Precision Mixing Meets Powerful Homogenization

The Smart Vortenizer is a versatile and high-performance mixer designed to streamline sample preparation. From gentle mixing to high-speed homogenization, it delivers consistent results with ease. Its LED progress bar allows users to monitor mixing status at a glance, while two operational modes—continuous for extended tasks and sensor-activated for quick bursts—offer flexibility and eliminate wrist strain. Durable and intuitive, the Smart Vortenizer is the ultimate tool for efficient and ergonomic workflows.



Cat. No.
118100500

Key Features



Capable of mixing 19 x 2 mL tubes at maximum speed without bench creep.



Available adapters for all common tube sizes.



In Sensor Mode, a motion sensor offers classic “pulse” operation or touchless mixing that prevents wrist fatigue.

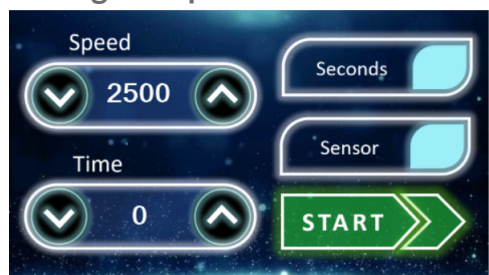


In Continuous Mode, set speed and time settings for extended mixing, and view task status from across a room with the bright LED progress bar.



A user-friendly 4.3-inch touch-screen offers simplicity and fine control.

Program Speed and Duration



LED Progress Bar



Motion Sensor



PERFORMANCE DATA - HOMOGENIZATION

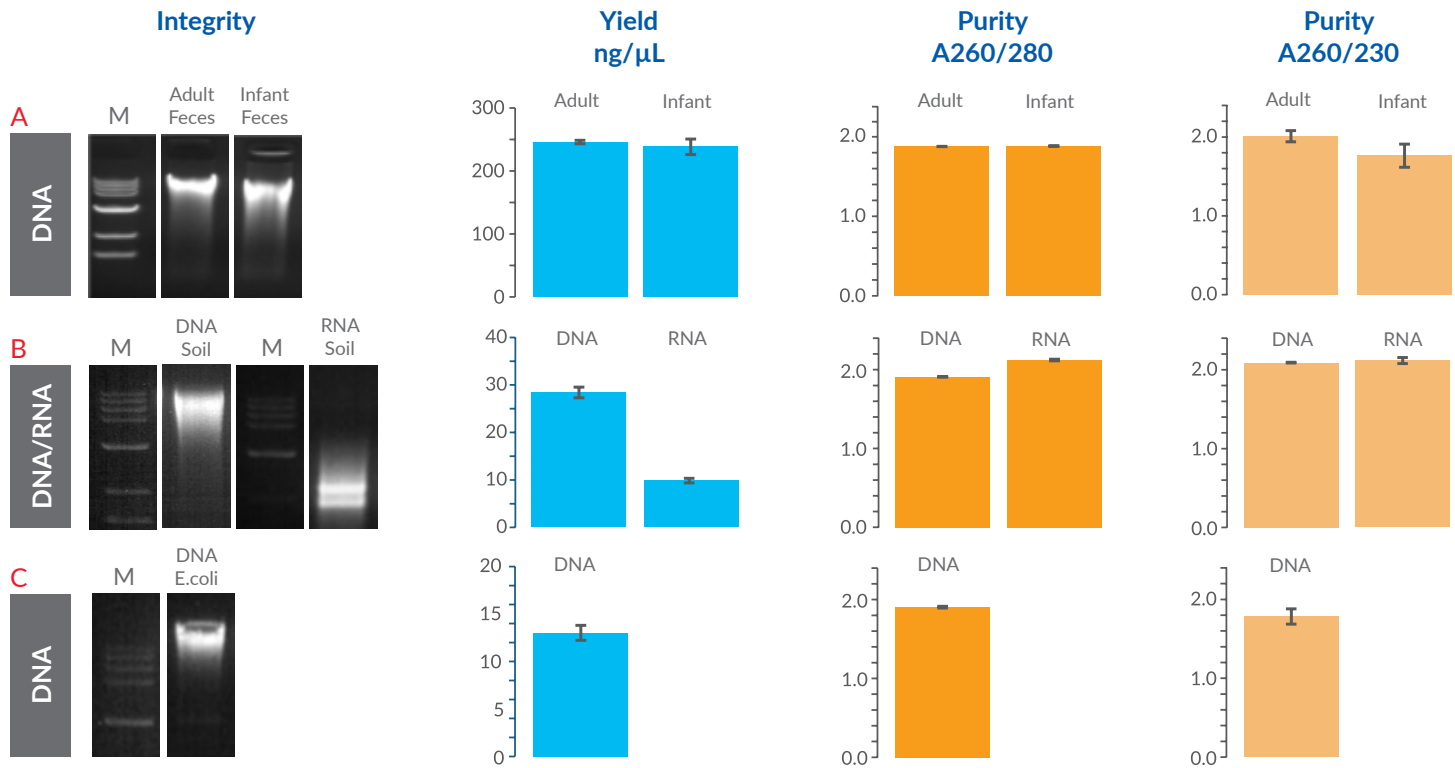


Figure 1. The Smart Vortimizer functions as a homogenizer. **A)** 100 mg of adult or infant feces was homogenized for 20 min at 2500 RPM and purified with the SPINeasy DNA Kit for Feces (Cat. No. 116547050). **B)** 0.2 g soil was homogenized for 20 min at 2500 RPM and purified using the SPINeasy DNA/RNA Kit for Soil (Cat. No. 116554050). **C)** 1.7 mL cultured *E. coli* was homogenized for 10 min at 2500 RPM and purified using the SPINeasy Kit for Microbiome (Cat. No. 116553050). Nucleic acid was analyzed by 1% agarose gel for integrity and spectrophotometry for yield and purity. Error bars represent standard errors from 3 replicates. Lane M shows a size marker.

Specifications	
Capacity	Up to 19 x 2 mL tubes
Speed Range	200 - 3000 rpm
Timer	1 sec to 99 min
Activation	Touch-free sensor or continuous
Base	Suction base for stability
Real-time LED Progress Bar	Real-time colored progress bar
Applications	Mixing or homogenization of soft samples
Dimensions (W x L x H) & Weight	10.6 x 6.4 x 5.2 in; 11 lb (27 x 16.3 x 13.2 cm; 5 kg)
Orbit Diameter	4 mm
Load Capacity	1.1 lb (0.5 kg) at 2000 rpm
User Interface	4.3 in (10.9 cm) color touch screen
Adapters	19 x 2 mL (Cat No. 118100600)
	9 x 15 mL (Cat No. 118100605)
	4 x 50 mL (Cat. No. 118100610)



MP BIOMEDICALS

AMERICAS: 800.854.0530 | custserv.na@mpbio.com
 EUROPE: 00800.7777.9999 | custserv.eur@mpbio.com
 APAC: +65 6775.0008 | custserv.ap@mpbio.com

Learn more at www.mpbio.com

