



# Myco-Visible

## Mycoplasma LAMP Detection Kit

(SKU: 093050601)

MP BIOMEDICALS

[www.mpbio.com](http://www.mpbio.com)

# SENSITIVE AND RAPID DETECTION OF MYCOPLASMA CONTAMINATION IN CELL CULTURES

Mycro-Visible Mycoplasma LAMP detection kit is a highly sensitive, specific, and rapid assay intended for the detection of mycoplasma contaminations in cell cultures. Mycro-Visible Mycoplasma LAMP detection kit achieves this by targeting and amplifying the 16S rRNA coding region of the *Mycoplasma* genome at loci that are well conserved in all Mollicutes, including *Acholeplasma laidlawii*, *Mycoplasma arginini*, *Mycoplasma fermentans*, *Mycoplasma hominis*,

*Mycoplasma hyorhinitis*, and *Mycoplasma orale*. The detection procedure can be completed within 45 mins and requires as little as 10 16S rRNA copies or 10 fg of *Mycoplasma* genomic DNA per reaction. No cross-reactivity with other bacterial, fungal and mammalian DNA by Primer-BLAST. The test assay is easy to perform with no thermal cycler required. Positive results can be visualized by color changes from pink to yellow.

## Features

- **No Special Instrument Required:**  
Direct detection with just a dry bath
- **Rapid and Comprehensive:**  
Detects *Mycoplasma* spp in 45 mins
- **Sensitive:**  
Requires as little as 10 16S rRNA copies or 10 fg of *Mycoplasma* genomic DNA per reaction
- **Easy to Use:**  
Innovative colorimetric detection system - vivid color change

## RESULTS INTERPRETATION

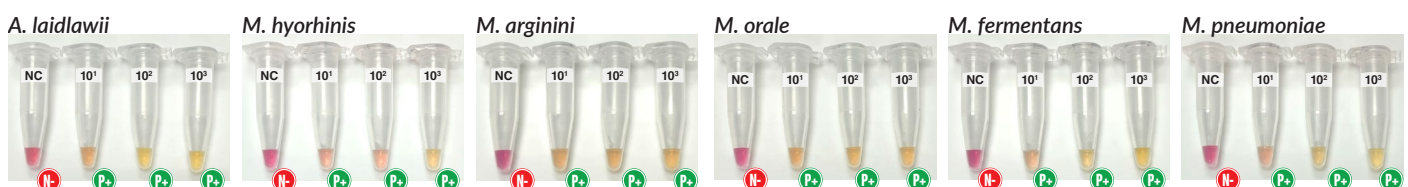


1. Test result shall be interpreted as positive if the reaction solution turns yellow or orange.



2. Test result shall be interpreted as negative if the reaction solution remains as pink.

## PERFORMANCE



Analytical sensitivity test of Mycro-Visible Mycoplasma LAMP Detection Kit. 10-fold serial dilution from 10 to 10<sup>3</sup> copies/μl was performed using six strains of *Mycoplasma* spp. Results showed that the kit could detect as low as 10 16S rRNA copies or 10 fg of *Mycoplasma* genomic DNA.