



HTLV Blot 2.4 Immunoblot

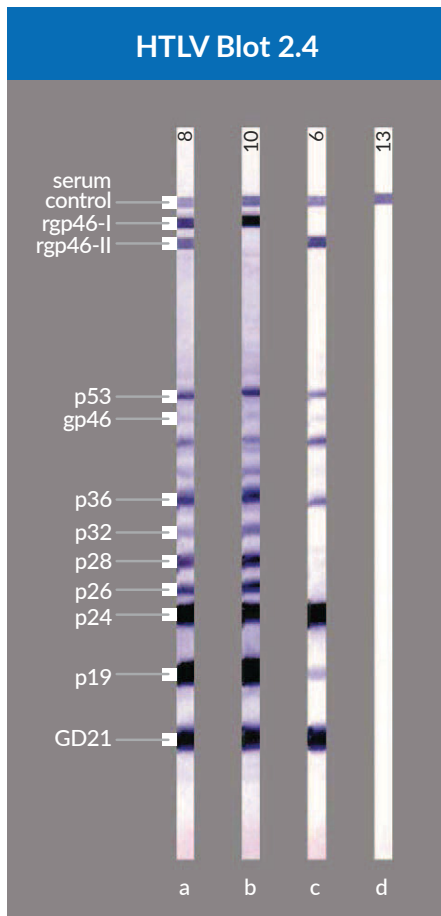
Gold Standard for HTLV-I and HTLV-II Diagnosis

MPBR0L-HTB202603-02

MP BIOMEDICALS

www.mpbio.com

Supplementary Testing For Antibodies To HTLV-I And HTLV-II In Human Serum Or Plasma



a = HTLV-I/II dual infection serum
b = Strong reactive control I
c = Strong reactive control II
d = Non-reactive control

Order Information

Cat No.	Pack Size
11080-018	18 Strips #
11080-036	36 Strips #
11088-018	18 Strips *
11088-036	36 Strips *

Kits are CE-Marked
* Kits are FDA-approved

Confirmation and differentiation of HTLV-I and HTLV-II infections

Enhanced sensitivity and specificity with unique group specific and type specific envelope recombinant proteins

Serum Control Band detects assay procedural error and false negative results

The MP Diagnostics HTLV Blot 2.4 is intended for the *in-vitro* detection of antibodies to HTLV-I and HTLV-II in human serum or plasma, as a more specific supplemental test on serum or plasma specimens found repeatedly reactive using screening procedures like ELISA or agglutination assays.

Rapid assay time of less than 3.5 hours

Easy methodology

Automated processing with Autoblot Systems

Performance Characteristic

Performance of HTLV Blot 2.4 with SFTS HTLV Panel 1994 (France)

Sample Description	No. of Sample	Results*				
		HTLV-I Positive	HTLV-II Positive	HTLV	Indeterminate	Negative
Anti-HTLV-I Positive	26	25	0	1	0	0
Anti-HTLV-II Positive	6	0	6	0	0	0
Anti-HTLV-I/II Positive (Dilution)	8 (HTLV-I) 5 (HTLV-II)	8	5	0	0	0
Anti-HTLV-I/II Negative	14	0	0	0	12	2
TOTAL	59	* Interpretation is in accordance with MP Diagnostics Interpretation Criteria. HTLV Blot 2.4 detected all samples that were anti-HTLV-I/II positive. Samples from the diluted panels were in good concordance with the classifications of the Montpellier panel.				



MP BIOMEDICALS

AMERICAS: 800.854.0530 | custserv.na@mpbio.com
APAC: +65 6775.0008 | custserv.ap@mpbio.com
EUROPE: 00800.7777.9999 | custserv.eur@mpbio.com

Learn more at www.mpbio.com

